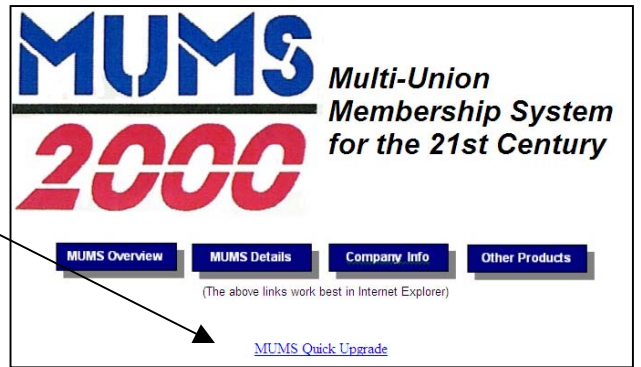
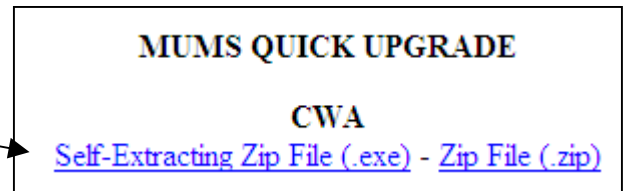


CWA MUMS Quick Update

Step #1: Go to WWW.MUMS2000.com
Click on [MUMS Quick Update](#)

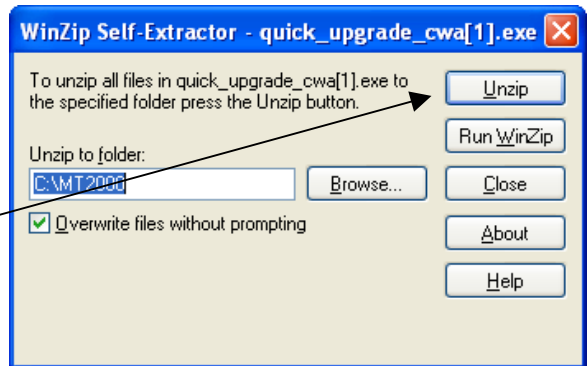


Step #2: Select the CWA Self-Extracting Zip



Step #3: Click on RUN and RUN and OK to RUN or whatever is possible to get to the following display.

Then click on UNZIP and when done close everything.



Step #4: On the 1st workstation you updated.

Without any one else running MUMS, enter MUMS and if asked to Update data, proceed with YES and OK's.

(Note this only has to be one on 1st upgraded workstation)

Step #5: On all other stations repeat steps 1 thru 3 only.